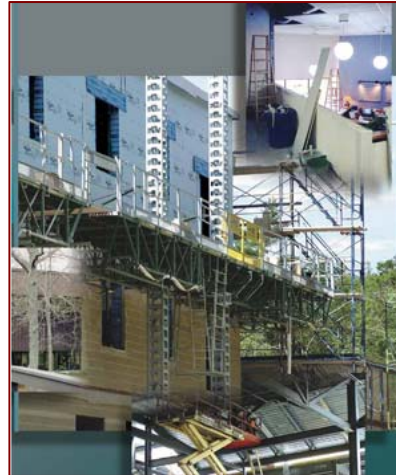


RMeans Facilities Construction Composite Cost Database

Primarily for commercial, industrial, municipal, and institutional property projects between \$10,000 and \$50,000,000.



Thousands of unit prices not found in any other RMeans databases...

- **Site work**
- **Fire protection systems**
- **Access flooring**
- **Magnetic card readers**
- **Plumbing fixtures**
- **Architectural equipment**
- **Conduit & cables**
- **Selective demolition...**

AND MORE!

For facility managers, contractors, architects, and engineers estimating for the maintenance and construction of commercial, industrial, municipal, and institutional properties.

Up-to-date facilities construction cost data for accurate budgeting and estimating of:

- New construction
- Repairs and renovation
- Maintenance
- Remedial construction
- Change orders
- Design and engineering
- Construction economies

Costs broken down into:

- Materials
- Labor
- Equipment
- Overhead and Profit

Provide immediate access to every imaginable cost associated with facilities construction and renovation, plus many common maintenance items – with more than 44,000 unit price line items.

Organized according to the MasterFormat04 system of classification and numbering as developed by the **Construction Specifications Institute (CSI)** and the **Construction Specifications Canada (CSC)**.

RMeans

 Reed Construction Data®

2009 Count of unit cost lines by CSI division:

CSI Division	Count	CSI Division	Count
1-General Requirements	825	21-Fire Suppression	330
2-Existing Conditions	992	22-Plumbing	6,518
3-Concrete	1,363	23-HVAC	4,944
4-Masonry	1,078	26-Electrical	9,745
5-Metals	1,724	27-Communications	198
6-Wood, Plastics & Compos.	1,455	28-Elec. Safety & Security	109
7-Thermal & Moisture Protection	1,437	31-Earthwork	1,945
8-Openings	2,080	32-Exterior Improvements	1,355
9-Finishes	1,992	33-Utilities	1,513
10-Specialties	1,057	34-Transportation	119
11-Equipment	996	35-Waterway & Marine	82
12-Furnishings	1,719	41-Mat. Proc. & Handling Equip.	56
13-Special Construction	731	44-Pollution Control Equip.	98
14-Conveying Equipment	300	Total Lines	44,761